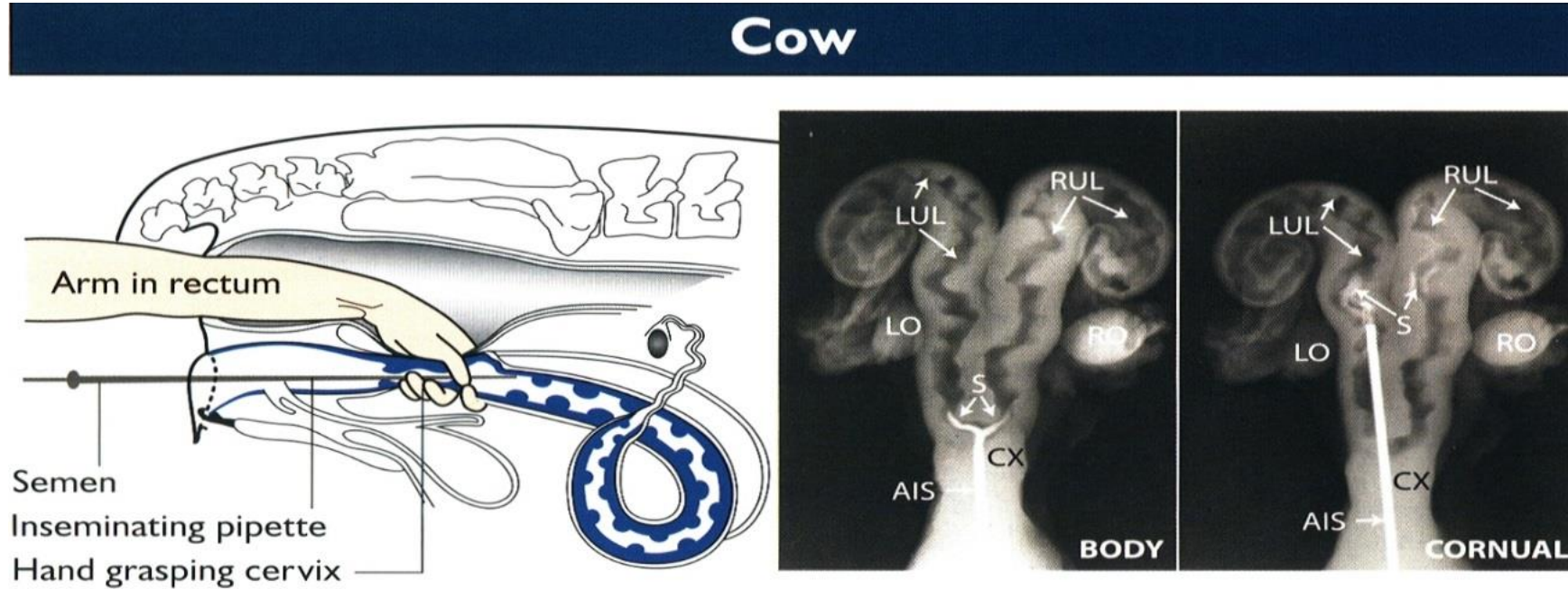


# Artificial Insemination



The radiographs above are from extirpated cow reproductive tracts (dorsal view). In cornual insemination, one-half of the semen is deposited in each uterine horn. In both examples, the inseminant volume is 0.5-ml. Cornual insemination minimizes the possibility of cervical deposition that results in significant retrograde loss of spermatozoa (See Figure 12-3). RUL= Right Uterine Lumen; LUL= Left Uterine Lumen; RO= right ovary; LO= left ovary; S= semen; AIS= artificial insemination syringe; CX= cervix